



# Valve - supply air

KI



## Description

Valve for supply air.  
Designed for ceiling mounting.  
Bayonet holders connect to socket VRGU, VRGL or VRGM.

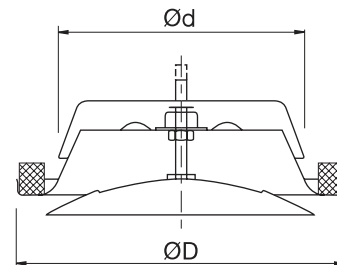
## Material

Painted galvanized sheet metal.

## Colour

White RAL 9010, gloss 70, equivalent to NCS S 0502 Y.

## Dimensions



Ød nom	ØD mm	m kg
80	111	0,14
100	130	0,21
125	160	0,30
160	190	0,41
200	245	0,65

## Ordering example



- 1
- 2
- 3
- 4
- 5
- 6
- 7
- 8
- 9
- 10
- 11
- 12
- 13
- 14
- 15
- 16
- 17
- 18



# Valve - supply air

KI

## Technical data

Air flow,  $q$  [l/s] and [m<sup>3</sup>/h], total pressure drop,  $\Delta p_t$  [Pa], throw length,  $l_{0,2}$  [m], and A-weighted sound power level,  $L_{WA}$  [dB(A)], for different settings,  $a$  [mm], are shown in the graphs.

### Sound power level in octave bands, $L_{Wok}$ [dB],

is calculated as  $L_{Wok} = L_{WA} + K_{ok}$ .  $K_{ok}$  is found in the table below.

Ød nom	Valve mounted in	Centre frequency [Hz]							
		63	125	250	500	1K	2K	4K	8K
80	Duct	-	3	2	-1	-6	-15	-27	-39
100	Duct	-	2	2	-1	-6	-14	-25	-37
125	Duct	-	2	4	-2	-7	-14	-25	-37
160	Duct	-	6	5	-3	-9	-14	-25	-36
200	Duct	-	5	5	-2	-8	-16	-24	-36

Tolerance	-	±3	±2	±2	±2	±2	±2	±2	±3
-----------	---	----	----	----	----	----	----	----	----

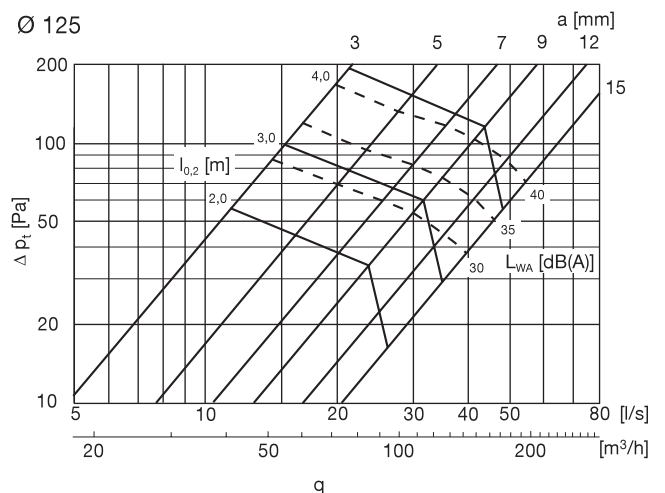
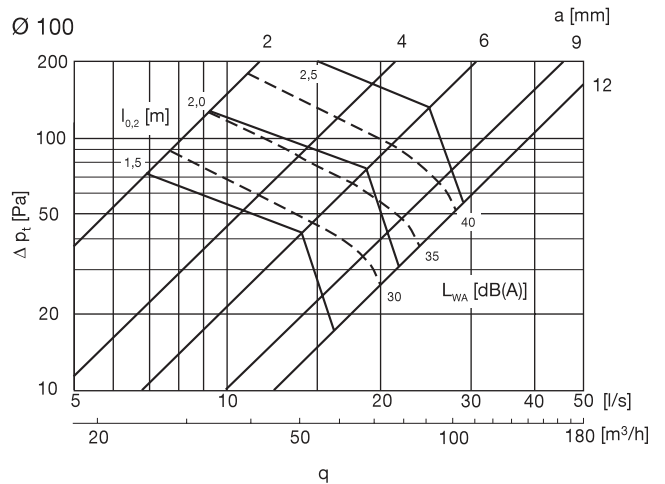
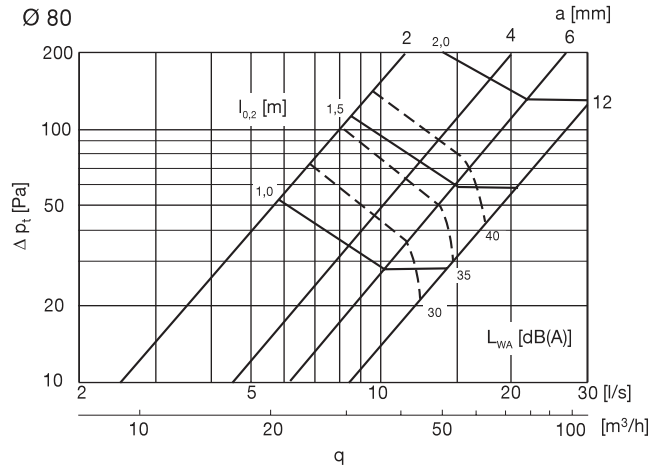
### Sound attenuation, $\Delta L$ , [dB]

Ød nom	Valve mounted in	Setting a [mm]	Centre frequency [Hz]							
			63	125	250	500	1K	2K	4K	8K
80	Duct	2	26	20	15	14	11	8	10	9
		6	24	19	13	11	8	5	8	6
		12	24	19	13	10	6	4	5	6
100	Duct	2	22	19	14	12	11	12	10	12
		6	22	17	11	9	8	9	6	9
		12	22	17	11	8	6	7	4	7
100	Duct	2	22	19	14	12	11	12	10	12
		6	22	17	11	9	8	9	6	9
		12	22	17	11	8	6	7	4	7
100	Duct	2	22	19	14	12	11	12	10	12
		6	22	17	11	9	8	9	6	9
		12	22	17	11	8	6	7	4	7
125	Duct	3	20	17	12	11	9	9	8	8
		7	19	15	10	8	7	7	5	5
		12	19	15	9	7	5	5	4	4
160	Duct	4	18	14	10	10	10	10	8	8
		9	18	13	9	8	7	7	6	6
		20	18	13	8	7	6	5	5	5
200	Duct	5	17	13	10	9	11	10	9	9
		9	16	12	8	8	9	9	8	7
		20	15	11	7	6	7	6	7	6

Tolerance	±6	±3	±2	±2	±2	±2	±2	±2	±3
-----------	----	----	----	----	----	----	----	----	----

### Measurement of air flow

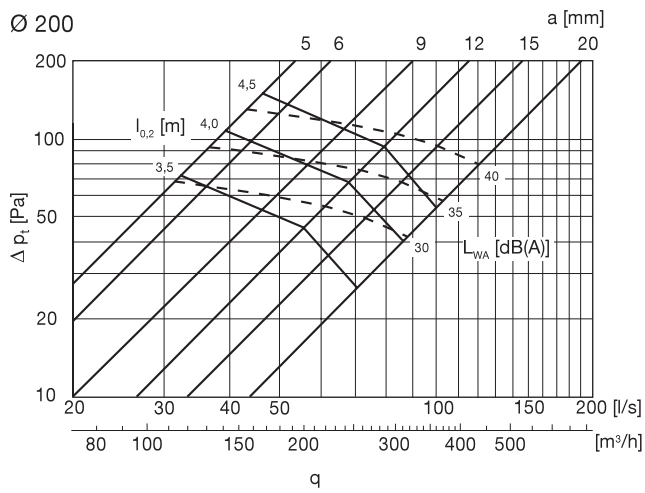
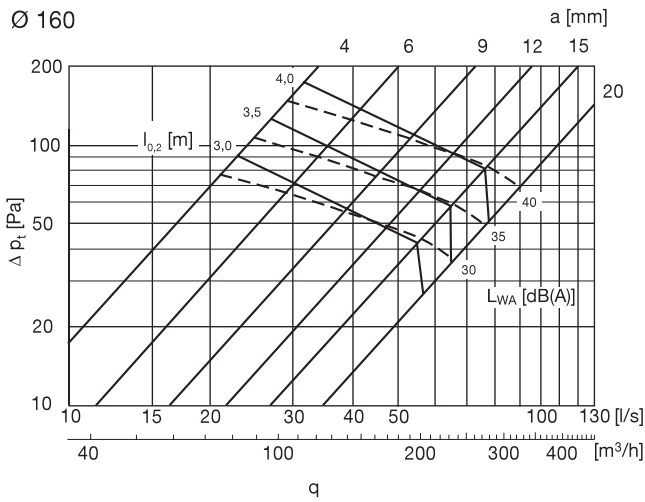
Data is available in a separate brochure.





# Valve - supply air

KI



- 1
- 2
- 3
- 4
- 5
- 6
- 7
- 8
- 9
- 10
- 11
- 12
- 13
- 14
- 15
- 16
- 17
- 18